

vax

DynamoPower
CORDLESS

GRAB & GO CORDLESS
CONVENIENCE FOR
QUICK CLEAN-UPS!



LET'S GET STARTED.

2 YEAR WARRANTY

VX42

Let's talk safety



Basic safety precautions

This vacuum cleaner is intended for household use only and NOT for commercial or industrial use.

READ ALL THE INSTRUCTIONS BEFORE USING THIS APPLIANCE

- It is a battery-operated appliance, the battery being charged inside the appliance.
- Only use the vacuum cleaner indoors and keep the area you're cleaning well lit.
- Keep fingers, hair and loose clothing from moving parts and openings whilst using the vacuum cleaner.
- This appliance is not intended for use by persons (including children) with reduced physical, sensory or mental capabilities or lack of experience and knowledge unless they have been given supervision or instruction concerning use of the appliance by a person responsible for their safety. Children should

not play with the vacuum cleaner. Cleaning and user maintenance should not be made by children without supervision

- Only Vax recommend tools and accessories should be used with this vacuum cleaner
- Keep the charger and vacuum cleaner in a dry place, and use them indoors only.
- Do not use charger with damaged cord or plug. If appliance or charger is not working as it should, has been dropped, damaged, left outdoors or dropped into water, take it to a Vax authorised repair agent prior to continuing use. Please contact our Customer Care Line on: AU: 1300 361 505 / NZ: 0800 800 900 (Mon-Fri 8.30am to 5.00pm) or visit www.vax.com.au / vax.co.nz for your nearest Vax authorised repair agent.

Please keep instructions for further use.



Don'ts

- ✗ Do not pull or carry by charger cord, use cord as a handle, close a door on cord, or pull cord around sharp edges or corners. Do not place product on cord. Do not run appliance on cord.
- ✗ Don't handle the charger plug or use the vacuum cleaner with wet hands.
- ✗ Don't charge the vacuum cleaner outdoors.
- ✗ Don't attempt to remove blockages with sharp objects as this may cause damage to the vacuum cleaner.
- ✗ Don't try to short the terminals of the battery and the charger.
- ✗ Don't use the vacuum cleaner with incorrect voltage as this may result in damage or injury to the user. The correct voltage is listed on the rating label.
- ✗ Don't vacuum harmful or toxic material (chlorine, bleach, ammonia, drain cleaner etc.)
- ✗ Don't vacuum up hot coals, cigarette butts, ash, matches or smoking hot burning items or use in an area where there may be harmful fluids (chlorine, bleach, and ammonia drain cleaner).
- ✗ Do not vacuum hard or sharp objects such as glass, nails, screws or coins etc.
- ✗ Don't not vacuum plaster dust, concrete dust or any other building or vitreous material.
- ✗ Do not vacuum flour, baking soda or any other powder-based carpet refresher or deodoriser.



Do's

- ✓ Always make sure the filter and dirt container are fitted correctly before using your vacuum cleaner.
- ✓ Turn off all controls on the vacuum cleaner before disconnecting or connecting to charger.
- ✓ Always turn off and disconnect from charger before carrying out any maintenance.
- ✓ Take extra care when cleaning on the stairs.
- ✓ Always protect the charger cord from heated surfaces or near open flames.
- ✓ Use only SAA approved 10amp extension cords, non-approved extension cords may overheat. Care should be taken to arrange the extension cord as it can be a trip hazard.
- ✓ Always carry the vacuum cleaner by the handle.
- ✓ Store your vacuum cleaner in a cool, dry area.

Thank you for buying this Dynamo Power.

Taking care of your carpets and hard floors

The Dynamo Power is designed to make vacuuming carpets and hard floors regularly, as effective and efficient as possible and this user guide will help you get the most out of your machine.

Maintaining your carpets and hard floors will ensure they keep their appearance for longer and Vax will help you take good care of them.

Taking care of your Dynamo Power

Also inside this guide are instructions on maintaining your new machine, so that it's always ready when you are to tackle your carpets and hard floors.

We're here if you need us



For troubleshooting simply visit or call:

Australia: 1300 361 505*

vax.com.au

New Zealand: 0800 800 900*

vax.co.nz

*Monday – Friday: 8:30am -5:00pm

Calls are charged at the standard local rate. Please make note of the serial number and model number of the product before calling.

Let's talk safety

Getting to know your machine

Getting started

Using your machine

Taking care of your machine

Let's talk technical

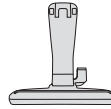
Accessories

What to do if it goes wrong

Getting in touch

Dynamo Power

Included with your machine



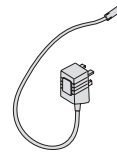
Docking station



2-in-1 tool



2-in-1 tool connector

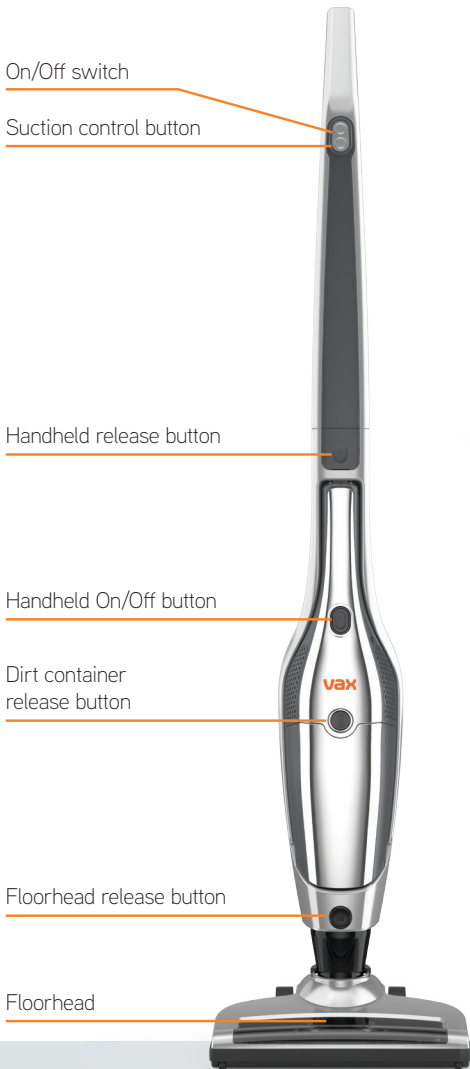


Charger



Screw (for attaching handle to vacuum cleaner)

Getting to know your machine



Technical Specification

Name **Dynamo Power 25.2V**
Model No **VX42**
Battery voltage **25.2V**
Run time **55 minutes***
Charge time **5 hours**
Weight **3.29kg**
Dust bin capacity **0.5l**

Charger Specification

Model No **YLS0241A- A300050**
Input voltage **100-240V-50Hz 0.8A Max**

Accessories & Consumables

Pre-motor filter
Model No **VX42F**

To purchase consumables and accessories, please visit vax.com.au/vax.co.nz

Subject to technical change without notice. * Low speed setting on hard floors. Images are illustrative only.

PLEASE READ 'LET'S TALK SAFETY' AT THE BEGINNING BEFORE USE

Assembling your 2-in-1 vacuum cleaner



Line up floorhead with main body, push firmly into place.



Line up handle with main body and lower into place.



Insert screw into back of the handle and tighten with a cross head screwdriver until handle is secured into place.

Charging your 2-in-1 vacuum cleaner

NOTE: Charging will be required before first use. Initial charge requires 10 hours.



Plug the charger into the back of the docking station and plug into mains.



Slide the vacuum onto the docking station. The LED indicator on the handheld On/Off button will initially turn green, then illuminate red to indicate that it is in place and charging.



Once fully charged (8-10) hours LED indicator on the handheld On/Off button will illuminate green and turn off to power saving mode.



When the vacuum needs recharging the LED indicator on the handheld On/Off button will flash red and the machine will cut out.

Using your machine

Operating as an upright vacuum cleaner

NOTE: Do not use brushbar on hard floors as it may cause damage.



Unplug the charger from the mains and remove the vacuum from the docking station.



Place foot on the floorhead and pull the handle backwards to recline the machine.



Press the ON button on the handle to turn the machine on.



To select between fast and slow suction press the suction controller button.

The brushbar will not rotate when the vacuum cleaner is in the upright position.



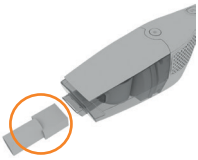
Operating as a handheld vacuum cleaner



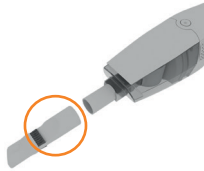
Press the handheld release button. Lift to remove the handheld from the main body.



Press the On/Off button to switch the handheld on.



For a more detailed clean, line up and push the 2-in-1 connector into the handheld nozzle, then push and attach the 2-in-1 tool securely onto the connector.



Press the On/Off button to switch the handheld off. Pull and remove the 2-in-1 tool and connector from the nozzle. Line up and return handheld into main body.

Always take extra care when cleaning stairs. Always switch the handheld off before connecting or disconnecting the accessories and before returning the handheld to the main body.

CAUTION



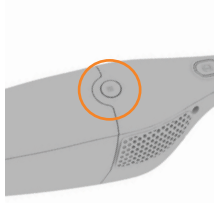
Taking care of your machine

Emptying the dirt container

CAUTION: Always switch off the vacuum cleaner before carrying out any maintenance or troubleshooting.



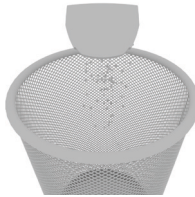
Press the handheld release button. Lift to remove the handheld from the main body.



Press the dirt container release button to remove the dirt container.



Squeeze tabs to remove filter, filter frame and separator.



Hold dirt container over a bin allowing dirt/debris to fall out.

Don't over fill the dirt container. Replace the filters every 6 months, depending on level of use. Severely discoloured and damaged filters need to be replaced.



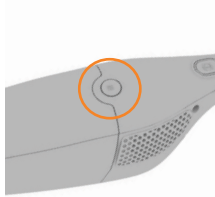
Taking care of your machine

Cleaning the filter

CAUTION: Always switch off the vacuum cleaner before carrying out any maintenance or troubleshooting. Do not use your vacuum cleaner without the filters in place.



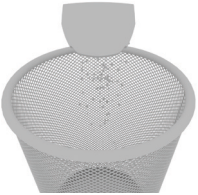
Press the handheld release button. Lift to remove the handheld from the main body.



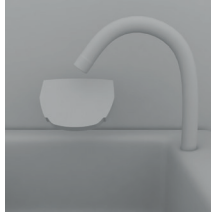
Press the dirt container release button to remove the dirt container.



Squeeze tabs to remove filter, filter frame and separator.



Tap filter, filter frame and separator over a bin to remove any dirt and debris. Do not wash filter frame or separator.



Pull foam filter from underneath of filter frame. Wash foam filter under running water (max 40°C). Do not use detergent.



Leave for at least 24 hours or until fully dry before replacing into the machine.

For best cleaning result filters require cleaning every 4-6 uses or as needed.



Taking care of your machine/Let's talk technical

Cleaning the terminals

CAUTION: Always switch off the vacuum cleaner before carrying out any maintenance or troubleshooting. Do not use your vacuum cleaner without the filters in place.



Using a dry cloth or soft dusting brush remove any dust or debris from terminals in vacuum, on handheld and on docking station.

CAUTION

For best performance terminals in vacuum, on handheld and on docking station must be free from dust and dirt.



Battery Maintenance

- Never short-circuit the battery, i.e. never touch both poles simultaneously, especially with metal objects.
- Never dismantle the battery.
- Never expose the battery to high temperatures.
- Improper handling can lead to liquid leaking from the battery. This can cause skin irritations. Avoid any contact with the fluid.
- Do not replace the battery with a battery of a different type.
- If it becomes necessary to replace the battery, contact the Vax Careline on AU: 1300 361 505 / NZ: 0800 800 900 to determine the location of your nearest authorised service agent.

Clearing blockages



Press the handheld release button. Lift to remove the handheld from the main body.



Press the floorhead release button and pull floorhead to remove.



Remove any blockage from the main body.

Cleaning blockage for the brushbar

If the brushbar has been obstructed, the motor protection sensor may have been activated. Clear any obstruction from the brushbar, stand the machine onto the docking station and wait 30 minutes for the vacuum cleaner to reset itself.



Using a pair of scissors remove any threads or hair caught around the brushbar.

Changing the brushbar



Turn the lock release to unlock the floorhead cover. Lift and remove floorhead cover.



Remove brush bar by lifting side of brushbar not connected to the spindle first.

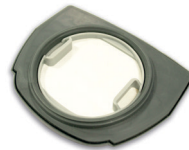


Replace the brushbar. Fitting the spindle side first, line up and push the brushbar into the spindle. Push the other side of the brushbar back into the floorhead and refit the floorhead cover.

Don't forget your accessories!

AU: www.vax.com.au / NZ: www.vax.co.nz

Pre-motor filter
Model No. VX42F



What to do if it goes wrong

Problem

Solution

Why does my vacuum cleaner have no power?

- Check the machine is fully charged. Go to 'Using your machine'.
- Check the charger is plugged into the mains and correctly connected to the docking station. Go to 'Getting started'.
- Check the handheld has been correctly fitted into the main body.
- Check terminals on vacuum, handheld and docking station are clean. Go to 'Let's talk technical'.
- If the brushbar has been obstructed, the Motor Protection Sensor may have been activated. Clear any obstruction from the brushbar. Wait 30 minutes for the vacuum cleaner to reset itself.

Why isn't my vacuum cleaner charging?

- Check the vacuum is connected correctly to the docking station. Go to 'Getting started'.
- Check terminals on vacuum, handheld and docking station are clean. Go to 'Let's talk technical'.
- Check charger and docking station for damage. If damaged please contact our Customer Care Line on: AU: 1300 361 505 / NZ: 0800 800 900 Monday-Friday 8.30am to 5.00pm
- Check the charger is plugged into the mains and correctly connected to the docking station. Go to 'Getting started'.

Why won't the vacuum cleaner pick up?

- Empty the dirt container and clean filters. Go to the 'Taking care of your machine' page.
- There may be a blockage in the vacuum cleaner. Go to 'Clearing blockages'.
- The brushbar may not be turning. Go to 'My brushbar isn't turning?' below.
- Low suction has been selected, increase to high suction. Go to 'Using your machine'.

My brushbar isn't turning.

- If the brushbar has been obstructed, the Motor Protection Sensor may have been activated. Clear any obstruction from the brushbar. Wait 30 minutes for the vacuum cleaner to reset itself.
- The brushbar may be blocked. Go to the 'Let's talk technical' page.

Why is the LED light continually flashing?

- The Red light will flash when the vacuum needs recharging. Go to 'Getting started'.

Taking care of you

2 YEAR WARRANTY

We're here if you need us. For trouble shooting, simply call or visit:

Australia: 1300 361 505*

vax.com.au

New Zealand: 0800 800 900*

vax.co.nz

*Monday-Friday 8.30am to 5.00pm

vax[®]

Distributed by Techtronic Industries Australia Pty. Ltd.
31 Gilby Road, Mt Waverley, VIC 3149 Australia.
Careline AU: 1300 361 505 www.vax.com.au
Careline NZ: 0800 800 900 www.vax.co.nz